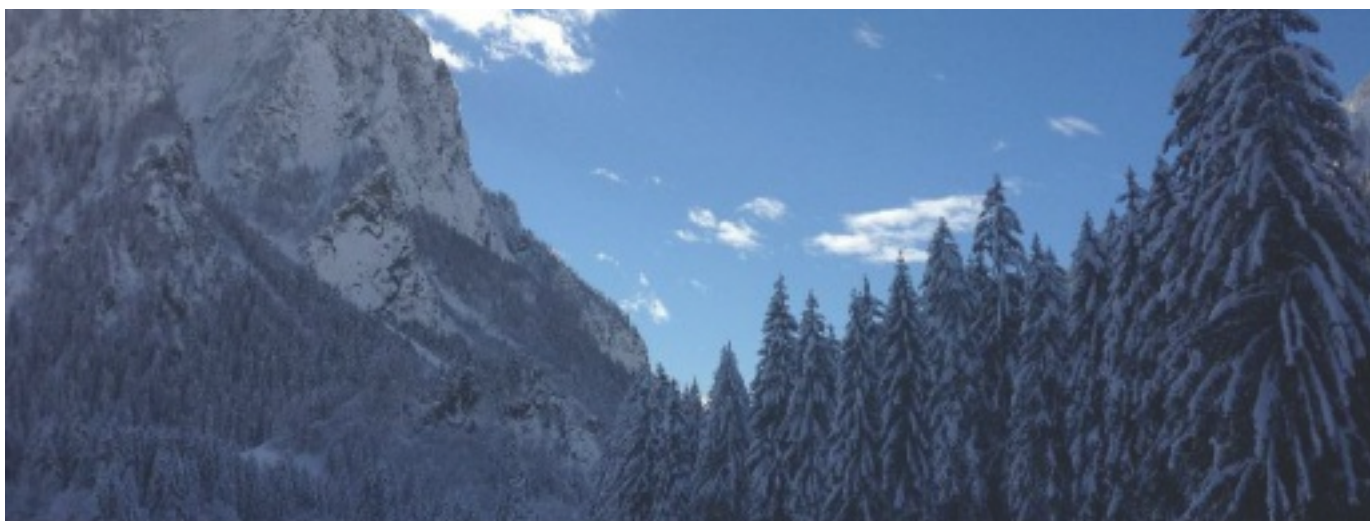


Winter walk - Campo Blenio



Departure
CAMPO BLENIO



Arrival
CAMPO BLENIO

Suitable for



Kids



Dogs



Adults

Itinerary features



Typology
Circular



Length
1.98 KM



Time required
0H 45



Difficulty
Easy

Close to this route



[Campo Blenio](#)

[A bath in the wooden tub - Campo Blenio](#)



[Campo Blenio](#)

[Piccolo Museo della Radio e della Fotografia](#)



[Campo Blenio](#)

[Ski resort Campo Blenio-Ghirone](#)



[Campo Blenio](#)

[Ristorante Casa Greina](#)



[Campo Blenio](#)

[Casa Montana Greina - Campo Blenio](#)



[Olivone](#)

[The Lukmanier Pass](#)

Tips

Signalization:

For winter walks, follow the logo indicated on the rose signposts:

Sentiero di Campo Blenio

454

Equipment:

- > Hiking stick
- > Sun cup
- > Gloves
- > Sunglasses
- > Sun cream
- > Water-bottle

Snow report:

Current information about the snow situation: [ticino.ch/neve](https://www.ticino.ch/neve)

Information

Impianti Turistici Campo Blenio-Ghirone
Via Cristallina 48
6724 Campo Blenio
Tel.: +41 91 872 21 15
E-mail: impianti@campoblenio.ch
Web: www.campoblenio.ch

Emergency number

 Ticino Soccorso 144

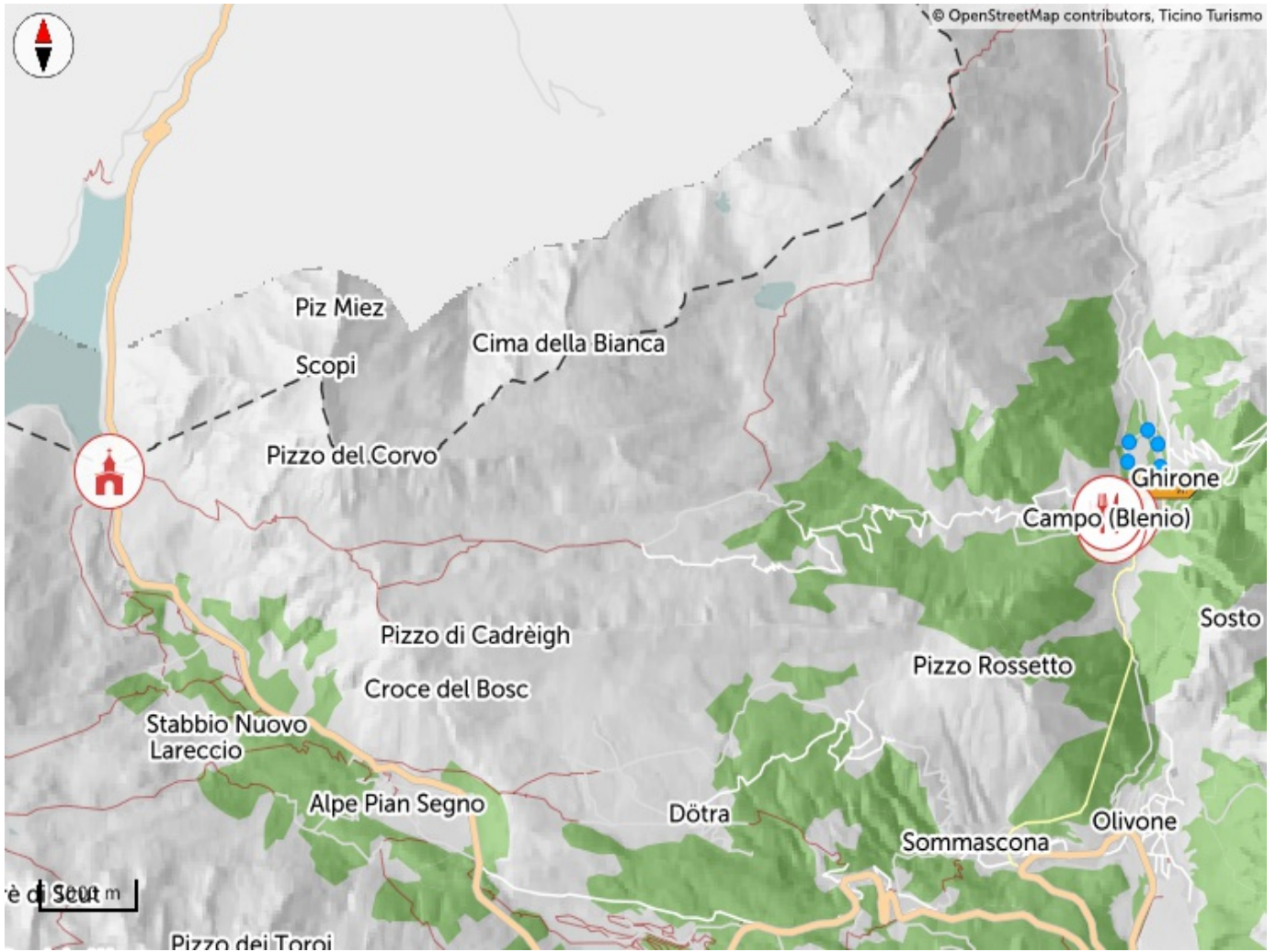
Share your itineraries

#hikeTicino



Download the App for itineraries

You don't know Ticino? The App will help you discover the itineraries closest to you.



Altitude graph

| | | |
|-------------|------------------|---------------|
| 30 m | 1,234 m | 30 m |
| Total climb | Maximum altitude | Total descent |



Login

To save an item as a favorite, you must first log in.

[NOT NOW](#)

[LOGIN](#)